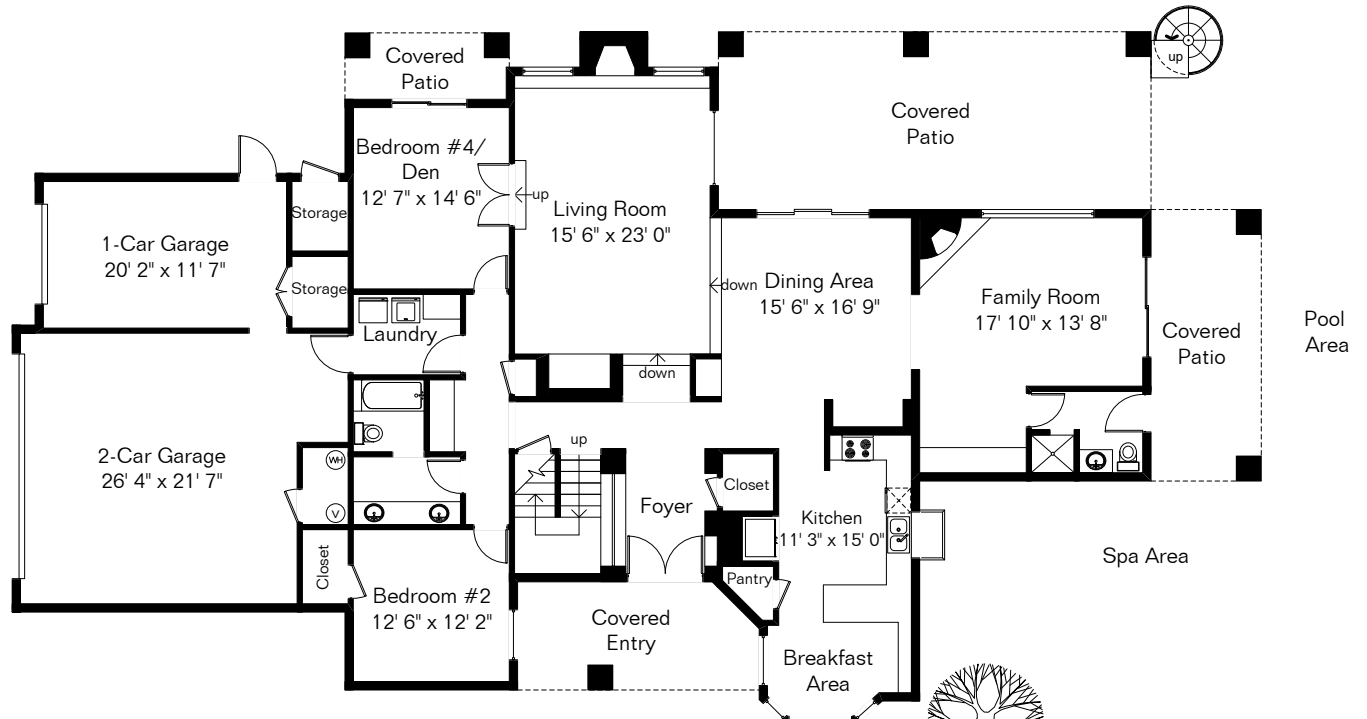
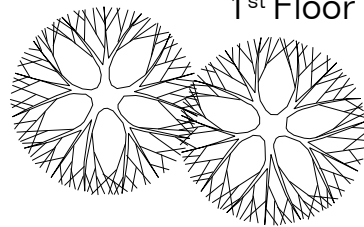


The square footages and room size information are deemed to be reliable but are not guaranteed and should be independently verified.

6140 N Calle de la Culebra



1st Floor



Living Area 3,743 Sq Ft
 Garages 895 Sq Ft
 2nd Floor

Site Visit April 2019

0 ft. 6 ft. 10 ft. 20 ft.



Copyright 2019 Floor Plans First! LLC
 All Rights Reserved.

www.FloorPlansFirst.com

Toll Free (877) 887-1500
 Voice (520) 881-1500
 Fax (520) 791-7701

